



ellia

RETREAT

ARM-260

Create your perfect environment with Ellia Essential Oils and Diffusers.

Our beautiful diffusers gently lift the aroma of Ellia Essential Oils into the air to help you reduce stress, boost mental clarity, and soothe your body and mind. Ellia Diffusers are beautiful, functional centerpieces that add natural style to your home.

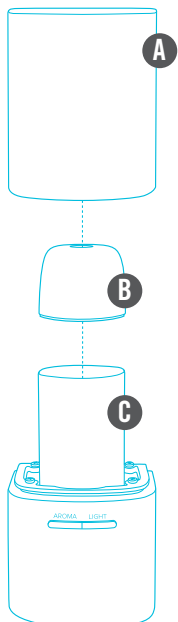
REGISTER YOUR DIFFUSER

Registering your diffuser secures the benefits of your warranty (even if you lose your receipt). It also makes it easier for us to assist you if you ever have an issue with your product.

www.homedics.com/product-registration



PARTS AND PIECES



- A – Outer cover
- B – Inner cover
- C – Diffuser base
- D – Safety cap
- E – Orifice reducer
- F – Wick
- G – Essential oil
- H – Orifice reducer tool

UNIQUE FEATURES AND SPECIFICATIONS

Wall Aroma Diffuser

Delivers natural aroma to enhance your mood.

Night Light

Low, medium and high settings.

Runtime

Up to 2 weeks continuous runtime or one month intermittent.

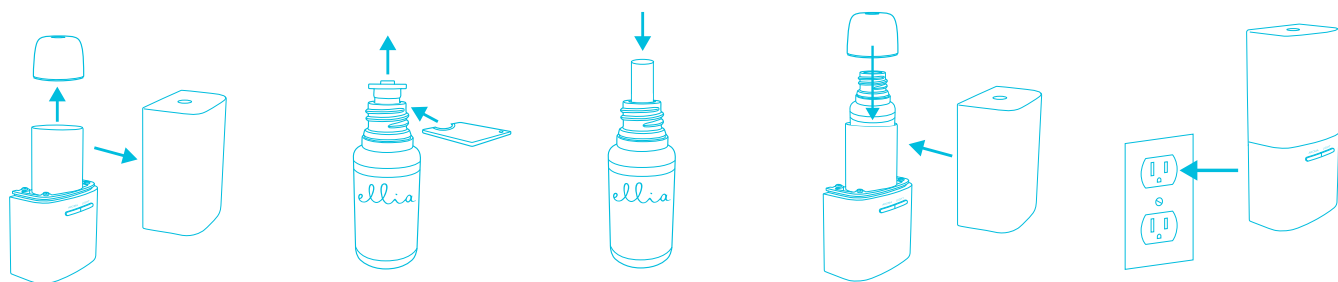
Waterless Operation

Diffuses scent directly from the oil bottle and wick.

Plugs Directly Into Wall

Easy, effortless, and low maintenance.

HOW TO USE AND DIFFUSE



1. Remove the outer cover from the base. Remove the inner cover from the chamber.
2. Remove orifice reducer from the oil bottle using the orifice reducer tool. Insert wick into oil bottle.
3. Place oil bottle in chamber upright and replace inner and outer covers. Twist to lock inner cover in place.

4. Plug diffuser into wall outlet keeping it in an upright position.
5. Choose your aroma and light setting.

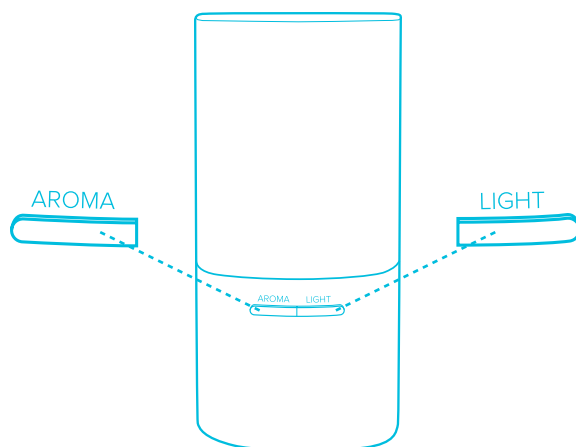
Aroma

Your diffuser has two aroma options. Press AROMA once for intermittent aroma, which will run for up to a month long. A blue light indicates the intermittent setting. Press again for continuous aroma, which will run for up to two weeks. A green light indicates the continuous setting. Press a third time to turn the aroma function off.

Light

Press LIGHT once to turn the light on high. Press a second time for the medium light setting. A third press is the low light setting. Press a fourth time to turn the light off. If the diffuser is plugged into GFCI outlet, be sure to test the circuit periodically.

Do not tamper with controls on your diffuser.



ESSENTIAL OILS

Visit us online to stock up on your favorite Ellia Essential Oils, including our single notes and signature blends.

www.ellia.com

CLEANING AND CARE

1. Before cleaning the unit, turn the power off and unplug from the outlet.
2. Remove the outer and inner covers.
3. Use a soft cloth to wipe the inside and surface of the diffuser and covers.

This diffuser is intended for use with an Ellia 15mL glass essential oil bottle and Ellia wick.

To Clean the Surface

Clean the surface of your diffuser with a clean, damp, soft cloth as often as needed.

TROUBLESHOOTING

Problem	Possible Cause	Solution
No aroma	Device does not have power	Plug the diffuser in and press the aroma button
No scent	Empty essential oil bottle	Replace essential oil bottle

THE ELLIA™ FAMILY

Our range of eco-inspired products are designed to complement your lifestyle and decor. Once you try an Ellia diffuser, you'll want one for every room in your home. Add to your own Ellia collection or buy a thoughtful gift for someone. Browse the entire product family at www.ellia.com.

CONTACT US

Questions or concerns? We're here to help. Contact a Consumer Relations representative by phone or email to help answer any questions. Please be sure to have the model number of your product available.

For Service in the USA

email: cservice@ellia.com
 phone: 1.248.863.3160
 Monday to Friday, 8:30am - 7:00pm EST

For Service in Canada

email: cservice@homedicsgroup.ca
 phone: 1.888.225.7378
 Monday to Friday, 8:30am - 5:00pm EST



ONE-YEAR LIMITED WARRANTY

For detailed warranty instructions, visit: www.ellia.com

To obtain warranty service on your Ellia product, contact a Consumer Relations Representative by the telephone number or email address for your country of residence. Please make sure to have the model number of the product available.

For Service in the USA

email: cservice@ellia.com

phone: 1.248.863.3160

Monday to Friday, 8:30am - 7:00pm EST

For Service in Canada

email: cservice@homedicsgroup.ca

phone: 1.888.225.7378

Monday to Friday, 8:30am - 5:00pm EST

FCC AND IC STATEMENTS

This device complies with part 15 of the FCC Rules. Operation is subject to the following two conditions: (1) This device may not cause harmful interference, and (2) this device must accept any interference received, including interference that may cause undesired operation.

This equipment has been tested and found to comply with the limits for a Class B digital device, pursuant to part 15 of the FCC Rules and CAN ICES-3 (B) /NMB-3 (B). These limits are designed to provide reasonable protection against harmful interference in a residential installation.

This equipment generates, uses and can radiate radio frequency energy and, if not installed and used in accordance with the instructions, may cause harmful interference to radio communications.

However, there is no guarantee that interference will not occur in a particular installation.

If this equipment does cause harmful interference to radio or television reception, which can be determined by turning the equipment off and on, the user is encouraged to try to correct the interference by one or more of the following measures:

- Reorient or relocate the receiving antenna.
- Increase the separation between the equipment and receiver.
- Connect the equipment into an outlet on a circuit different from that to which the receiver is connected.
- Consult the dealer or an experienced radio/TV technician for help.

Changes or modifications not expressly approved by HoMedics could void the user's authority to operate this equipment.

IMPORTANT SAFETY INSTRUCTIONS

WARNING – When using electric products, basic precautions should always be followed, including the following:

- a) Read all the instructions before using the product.
- b) To reduce the risk of injury, close supervision is necessary when a product is used near children.
- c) Do not put fingers or hands into the product.

SAVE THESE INSTRUCTIONS

IMPORTANT SAFETY INSTRUCTIONS

WHEN USING ELECTRICAL PRODUCTS, ESPECIALLY WHEN CHILDREN ARE PRESENT, BASIC SAFETY PRECAUTIONS SHOULD ALWAYS BE FOLLOWED, INCLUDING THE FOLLOWING:

READ ALL INSTRUCTIONS BEFORE USING

- Always place diffuser on a firm, flat surface. A waterproof mat or pad is recommended for use under the diffuser. Never place it on a rug or carpet, or on a finished floor that may be damaged by exposure to water or moisture.
- Always unplug the unit from the electrical outlet immediately after using and before cleaning.
- DO NOT reach for a unit that has fallen into water. Unplug it immediately.
- DO NOT place or drop into water or other liquids.
- DO NOT use water above 86° Fahrenheit.
- Use this unit only for its intended use as described in this document, the quick start guide and user guide.
- Do not use attachments not recommended by Ellia or HoMedics; specifically any attachments not provided with this unit.
- NEVER drop or insert any object into any opening.
- DO NOT place the diffuser near heat sources, such as a stove.
- Always keep the cord away from high temperature and fire.
- To disconnect, turn unit off, then remove the plug from the outlet.
- DO NOT use outdoors. For indoor use only.
- Never cover the unit while it is operating.
- If the cord sustains damage, you must stop using this product immediately and contact Ellia consumer relations (see Warranty section for consumer relations contact information).
- Perform regular maintenance on the ultrasonic membrane.
- Never use detergent to clean the ultrasonic membrane.
- Never clean the ultrasonic membrane by scraping with a hard object.
- Do not attempt to adjust or repair the unit. Servicing must be performed by professional or qualified personnel.
- Stop using this unit if there is an unusual noise or smell.
- Unplug this unit when not in use for a long period of time.
- Do not touch the water or any parts of the unit that are covered by water while the unit is on or plugged in.
- Do not wash, adjust, or move this unit without first unplugging it from the electrical outlet.
- Keep this unit out of reach of children.